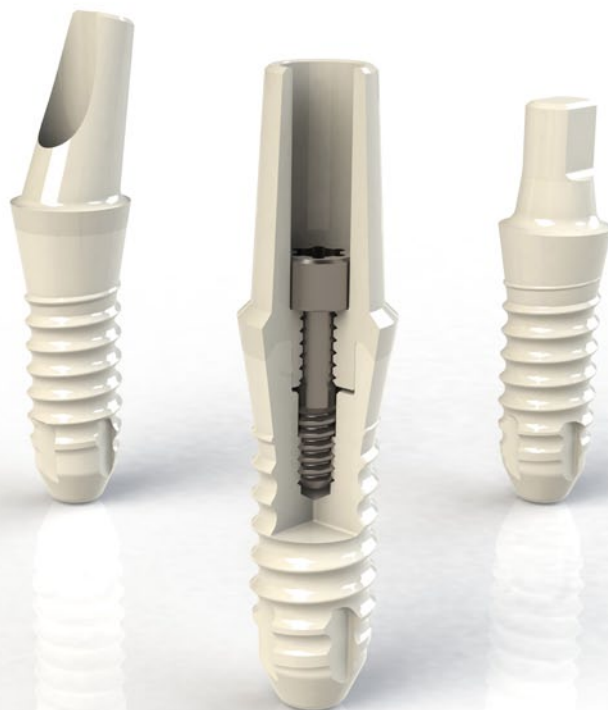




PRODUCT CATALOG



INNOVATING METAL-FREE IMPLANTOLOGY



About Us

Founded in 2006, AXIS biodental is a privately held Swiss company specialized in aesthetic metal-free implantology. In conjunction with AXIS Dental, the company has been active for nearly 20 years in the dental industry.

AXIS biodental collaborates with world-renowned research centers as well as high-tech industrial partners for the development and the manufacturing of its products.

Today, AXIS biodental delivers the next generation of implantology solutions, meeting professionals' requirements and patients' needs.

This product portfolio has been designed to provide dental surgeons and technicians with a full range of metal-free replacement solutions, quality prosthetics and efficient instruments.

Index

Implants	1
Soft Tissue Management	1
Impression	2
Prosthetics	2
Instruments	3
Surgical & Prosthetic Kits	4
Rescue Tools	4



Implants

AXIS' soft tissue level implants are made out of Y-TZP Zirconia, a high-performance bioceramic. They are available in 2 versions, a screwed two-piece and a one-piece implant.

Hexalobe

Hexalobe M8

Zirconia
Ø4.0 / L8
ref. A1078



Hexalobe M10

Zirconia
Ø4.0 / L10
ref. A1079



Hexalobe M12

Zirconia
Ø4.0 / L12
ref. A1080



AXIS Hexalobe implants are provided with a cover cap (ref. D1171) PEEK - Ø4.5/H0.5



Monobloc

Monobloc M8

Zirconia
Ø4.0 / L8
ref. A1074



Monobloc M10

Zirconia
Ø4.0 / L10
ref. A1075



Monobloc M12

Zirconia
Ø4.0 / L12
ref. A1076



Soft Tissue Management

Cover Screw

PEEK / Titanium
Ø4.5 / H0.8
ref. D1153



Healing Abutment H2.5

PEEK
Ø4.5 / H2.5
ref. D1048



Healing Abutment H4.0

PEEK
Ø5.0 / H4.0
ref. D1132



Temporary Abutment

PEEK
Ø4.5 / H7.5
ref. D1131



Impression

Hexalobe Transfer Cap

PEEK
Ø5.0 / H6.0
ref. D1040



Hexalobe Open Tray Transfer

PEEK / Stainless Steel
Ø5.0 / H17.5
ref. D1152



Monobloc Transfer Cap

PEEK
Ø5.0 / H6.0
ref. D1036



Hexalobe Analog

PEEK
L12
ref. D1042



Monobloc Analog

Stainless Steel
L17
ref. D1037



Prosthetics

Laboratory Abutments

Laboratory Straight Abutment

POM
Ø4.5 / H8.0
ref. D1158



Laboratory 15° Angled Abutment A

POM
Ø4.5 / H8.0
ref. D1159



Laboratory 15° Angled Abutment B

POM
Ø4.5 / H8.0
ref. D1160



Definitive Abutments

Straight Abutment

PEKK
Ø4.8 / H8.0
ref. D1154



15° Angled Abutment A

PEKK
Ø4.8 / H8.0
ref. D1155



15° Angled Abutment B

PEKK
Ø4.8 / H8.0
ref. D1157



Screws

Laboratory Screw

Titanium
Ø1.6 / L7
ref. D1162



Prosthetic Screw

Titanium
Ø1.6 / L7
ref. D1149



Holistic Prosthetic Screw

Holisticor™
Ø1.6 / L7
ref. D1165



Instruments

Tissue Punch

Stainless Steel
 $\varnothing_{int}4.0 / \varnothing_{ext}5.0 / L23$
 ref. B1010



Round Bur

Stainless Steel
 $\varnothing1.4 / L26.5$
 ref. B1011



Point Drill

Stainless Steel
 $\varnothing1.5 / L27.5$
 ref. B1012



Pilot Drill

Stainless Steel
 $\varnothing2.4 / L34$
 ref. B1013



Direction Gauge

Stainless Steel
 $\varnothing2.4 / L20$
 ref. B1022



Drill S

Stainless Steel
 $\varnothing2.9 / L34$
 ref. B1014



Drill M

Stainless Steel
 $\varnothing3.4 / L34$
 ref. B1015



Depth Gauge M

Stainless Steel
 $\varnothing3.4 / L27$
 ref. B1024



Tap M

Stainless Steel
 $\varnothing4.0 / L31$
 ref. B1082



Profile Drill

Stainless Steel
 $\varnothing4.5 / L26.5$
 ref. B1170



Hexalobe Holder

Stainless Steel
 L24
 ref. B1021



Monobloc Holder

PEEK / Stainless Steel
 L25
 ref. B1108



Handpiece Extension

Stainless Steel
 L24
 ref. C1029



RA Screwdriver

Stainless Steel
 L25
 ref. C1156



Laboratory Screwdriver

Stainless Steel
 L22
 ref. C1028



Torque Wrench

Stainless Steel
 L89
 ref. C1031



Wrench Adapter

Stainless Steel
 L13
 ref. C1030



Surgical & Prosthetic Kits

Surgical Kit - ref. B1085

including ref. B1011, B1013, B1022,
B1014, B1015, B1024,
B1082, 2xB1021, C1029,
C1156



Prosthetic Planning Kit - ref. D1161

including ref. D1158, D1159, D1160,
D1162, C1028



Rescue Tools

Trephine Ø4.0

Stainless Steel
 $\text{Ø}_{\text{int}}4.0 / \text{Ø}_{\text{ext}}5.0 / \text{L31}$
ref. B1143



Trephine Ø4.5

Stainless Steel
 $\text{Ø}_{\text{int}}4.5 / \text{Ø}_{\text{ext}}5.5 / \text{L31}$
ref. B1144



Screw Extraction Kit

PEEK / Stainless Steel
ref. C1122





AXIS biodental SA

Les Rosées 5 - 2336 Les Bois - Switzerland

Tél. +41 (0)32 961 10 90 - Fax +41 (0)32 961 18 66 - mail@axis-biodental.ch - www.axis-biodental.ch